

Q A Band Scales

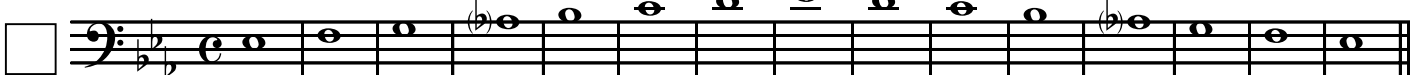
Trombone
Baritone

Concert Bb Scale



Concert Eb Scale

16



Concert Ab Scale

31



Concert Db Scale

46



Concert Gb Scale

61



Concert B/Cb Scale

76



91 Concert E/Fb Scale

Musical notation for the Concert E/Fb Scale, starting at measure 91. The scale is written in bass clef with a key signature of two sharps (F# and C#) and a common time signature (C). The notation includes a sequence of notes with accidentals (sharps and naturals) and a final double bar line.

106 Concert A Scale

Musical notation for the Concert A Scale, starting at measure 106. The scale is written in bass clef with a key signature of two sharps (F# and C#) and a common time signature (C). The notation includes a sequence of notes with accidentals (sharps and naturals) and a final double bar line.

121 Concert D Scale

Musical notation for the Concert D Scale, starting at measure 121. The scale is written in bass clef with a key signature of two sharps (F# and C#) and a common time signature (C). The notation includes a sequence of notes with accidentals (sharps and naturals) and a final double bar line.

136 Concert G Scale

Musical notation for the Concert G Scale, starting at measure 136. The scale is written in bass clef with a key signature of two sharps (F# and C#) and a common time signature (C). The notation includes a sequence of notes with accidentals (sharps and naturals) and a final double bar line.

151 Concert C Scale

Musical notation for the Concert C Scale, starting at measure 151. The scale is written in bass clef with a key signature of one flat (F) and a common time signature (C). The notation includes a sequence of notes with accidentals (flats and naturals) and a final double bar line.

166 Concert F Scale

Musical notation for the Concert F Scale, starting at measure 166. The scale is written in bass clef with a key signature of one flat (F) and a common time signature (C). The notation includes a sequence of notes with accidentals (flats and naturals) and a final double bar line.